

PAPER

Giant non-equilibrium vacuum friction: role of singular evanescent wave resonances in moving media

To cite this article: Yu Guo and Zubin Jacob 2014 *J. Opt.* **16** 114023

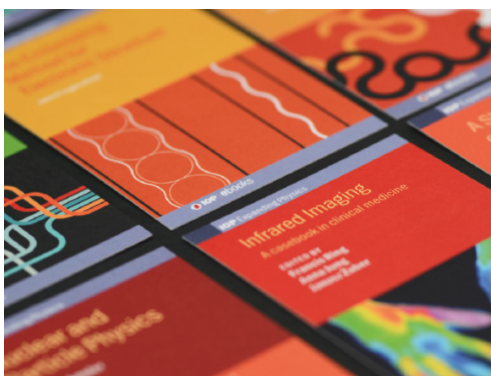
View the [article online](#) for updates and enhancements.

Related content

- [Interaction of metamaterials with optical beams](#)
V Kivijärvi, M Nyman, A Karrila et al.
- [Theory of quantum friction](#)
Mário G Silveirinha
- [Comment on 'Fully covariant radiation force on a polarizable particle'](#)
A I Volokitin and B N J Persson

Recent citations

- [Enhancement of rotational vacuum friction by surface photon tunneling](#)
Zhujing Xu et al
- [Resonant photon emission during relative sliding of two dielectric plates](#)
Aleksandr Volokitin
- [Effect of Resonant Photon Emission in Radiative Heat Transfer and Generation](#)
A. I. Volokitin



IOP | ebooks™

Bringing together innovative digital publishing with leading authors from the global scientific community.

Start exploring the collection—download the first chapter of every title for free.

Invited Article

Giant non-equilibrium vacuum friction: role of singular evanescent wave resonances in moving media

Yu Guo and Zubin Jacob

Department of Electrical and Computer Engineering, University of Alberta, Canada

E-mail: zjacob@ualberta.ca

Received 4 September 2014, revised 28 September 2014

Accepted for publication 29 September 2014

Published 3 November 2014

Abstract

We recently reported on the existence of a singular resonance in moving media which arises due to perfect amplitude and phase balance of evanescent waves. We show here that the nonequilibrium vacuum friction (lateral Casimir–Lifshitz force) between moving plates separated by a finite gap is fundamentally dominated by this resonance. Our result is robust to losses and dispersion as well as polarization mixing which occurs in the relativistic limit.

Keywords: light matter interaction, surface plasmon resonances, singular resonances

(Some figures may appear in colour only in the online journal)

1. Introduction

Nanoscale heat transfer beyond the black body limit has led to considerable interest due to simultaneous development of theoretical tools utilizing Rytov's heat transfer theory and experimental validation based on near-field measurements [1–13]. Surface waves play a key role in heat transfer which has been ascertained through bimetallic cantilever experiments [7] as well as near-field thermal emission spectroscopy [11, 14]. This large radiative thermal energy transfer can be accompanied by momentum transfer and fluctuational forces which are nonequilibrium Casimir–Lifshitz forces [15–24].

One interesting case is that of Casimir plates at different temperatures in relative motion with a fixed gap between them [17, 21, 25, 26]. The heat transfer is accompanied by a lateral force opposing the motion (drag) since the exchanged photons carry preferential momentum along the direction of motion. This is fundamentally different from the stationary case where the symmetry of the configuration imposes the condition of net zero lateral momentum transfer.

In this paper, we outline a derivation of nonequilibrium vacuum friction utilizing the scattering matrix approach of heat transfer adapted to the case of moving media [20, 21].

Our aim is to study nanoscale light matter interaction in moving media which reveal subtle effects fundamentally distinct from conventional photonic media [18, 27, 28]. In particular, we analyze the role of singular evanescent wave resonances on nonequilibrium vacuum friction [21]. We recently introduced a class of singular Fabry–Perot resonances in moving media which occurs due to a perfect phase and amplitude balance (PAB) condition [21]. Such a combined PAB condition can only occur for plates in relative motion and is fundamentally impossible in the stationary case. We considered before the role of this resonance for heat transfer [21] while here our focus is on the force accompanying the heat transfer (nonequilibrium vacuum friction). We show the giant increase in the lateral drag force between the moving plates separated by a fixed gap. We trace the origin of this giant enhancement to the role of the unique PAB condition [21]. We also consider in detail the role of polarization mixing and show that the concept of the singular resonance is valid in the relativistic limit.

The paper is arranged as follows. In section 2, we briefly mention important earlier work in the field of vacuum friction and explain the origin of a singular resonance condition in moving media. In section 3, we derive a compact form for the

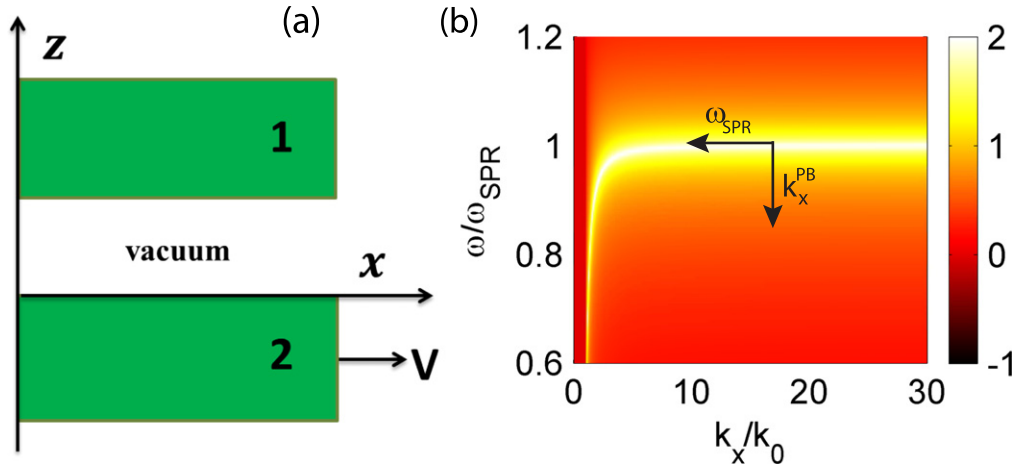


Figure 1. (a) Schematic of the work. Two half-space plates composed of the same medium are separated by a vacuum gap. One plate is moving at a constant velocity V along the its interface (x direction). (b) Magnitude of reflection coefficient from a stationary plate of Drude metal in log scale, which depicts the enhancement in the reflection coefficient due to the surface plasmon resonance (SPR). The special phase balance wavevector is $k_x^{PB} \approx 20k_0$ at a velocity of $V = c/10$ and $\omega_{SPR} = 10^{15}$ Hz which leads to the unique mapping of the SPR resonance frequency of the moving plate to the negative SPR resonance frequency of the stationary plate ($\omega'_{SPR} = -\omega_{SPR}$).

scattering matrix of the moving plate including polarization mixing which occurs in the relativistic limit. Using this result we show the persistence of the singular resonance condition in spite of polarization mixing in section 4. Section 5 outlines a derivation of the nonequilibrium vacuum friction using the scattering matrix approach developed for heat transfer. Finally, in section 6, we analyze in detail the role of the singular resonance condition on the giant nonequilibrium drag force between moving plates.

2. Singular resonance in moving media

Macroscopic van der Waals interactions and frictional forces proportional to the velocity goes back to the early work by Teodorovich who considered moving plates separated by a fixed gap [15]. The dissipative nature of this friction and a quantum field theoretic approach was outlined in [16]. Pendry provided a derivation of this fluctuational drag force in the $T \rightarrow 0$ limit (quantum friction) making use of the zero point energy associated with the field fluctuations [17] wherein the macroscopic reflection coefficients play a key role. Other macroscopic approaches have also been recently developed [29, 30]. The stress tensor approach for friction between moving media closely following Lifshitz theory of Casimir forces was developed by Volokitin and co-workers [25]. Our approach closely follows that developed by Kardar *et al* who interprets the emission and absorption of photons and resultant forces in terms of the near-field emissivity/absorptivity [20]. We strongly emphasize that the existence of this nonequilibrium vacuum friction between moving plates is now unanimously agreed to by everyone without any debate.

We showed recently the existence of a unique PAB condition for surface plasmon polariton waves supported by moving metallic plates separated by a finite gap (figure 1(a)) [21]. Consider a plane wave given by $e^{i(\vec{k}\cdot\vec{r}-\omega t)}$ incident from

vacuum on an interface (x - y plane) moving at velocity V parallel to the x -axis. The moving plate will then perceive a Doppler shifted frequency and wavevector [31], $\omega' = \gamma(\omega - k_x V)$, $k'_x = \gamma(k_x - \beta k_0)$ where $\beta = V/c$, $\gamma = 1/\sqrt{1 - \beta^2}$.

The Doppler shift can lead to a unique condition when the frequencies in the moving and stationary frames are exactly the opposite of each other

$$\omega' = -\omega, \quad (1)$$

which occurs at a special wavevector (phase balance wavevector)

$$(k_x^{PB})' = k_x^{PB} = \left(1 + \frac{1}{\gamma}\right)\frac{\omega}{V}. \quad (2)$$

At this specific wavevector, the conventional Fabry–Perot resonance condition

$$\Delta_c = 1 - r_1 r_2 e^{2ik_z d} = 0 \quad (3)$$

takes the form

$$\Delta_c = 1 - r_1(\omega) r_2(-\omega) e^{-2|k_z|d} = 1 - |r_1(\omega)|^2 e^{-2|k_z|d} = 0, \quad (4)$$

where k_z is the wavevector along the perpendicular direction, d is the gap between the plates, r_1 and r_2 are the reflection coefficients at the two interfaces, and we have used $r_2(-\omega) = r_1^*(\omega)$.

If we function at the frequency where the metallic plates support a surface plasmon resonance (SPR) [32, 33], we can achieve amplitude enhancement such that $|r(\omega_{SPR})| > 1$. The perfect amplitude balance between evanescent wave enhancement at the plate and amplitude decay in the gap is achieved at

$$d_0 = \ln |r_1|/|k_z|. \quad (5)$$

Thus one can fully satisfy the PAB condition to achieve a

singular resonance. The SPP dispersion of figure 1(b) shows the existence of a surface wave resonance (field enhancement) with large wavevectors in the local limit. The waves with the specific phase balance wavevector (denoted by arrow) on the dispersion relation represent those SPP waves which are Doppler shifted exactly to their negative frequency counterpart. For these SPP waves, a unique Fabry–Perot resonance is achieved with Δ_c being identically zero which can never occur in stationary passive plates due to causality [34]. We emphasize that this resonance relies on conversion of mechanical energy of motion to electromagnetic energy and gives a unique singularity in the Fabry–Perot multi-reflection factor ($1/\Delta_c$) that is routinely encountered in various phenomena.

3. Scattering matrix of a moving plate with polarization mixing

Moving plates perceive Doppler shifted frequencies and hence the reflection coefficients of evanescent waves (EVs) bouncing between them are fundamentally different from the textbook case of stationary Fabry–Perot plates. Generally speaking even for moving isotropic media, the reflected waves of p-polarized incident waves will have s-polarized components, and vice-versa. This is called polarization mixing due to motion. Here, we provide a succinct and generalized form of the scattering matrix of a moving plate and show the existence of the singular condition despite effects like polarization mixing that occur at relativistic velocities [21]. The scattering matrix of the moving plate S can be expressed by

$$S = \begin{bmatrix} r_{ss} & r_{sp} \\ r_{ps} & r_{pp} \end{bmatrix}. \quad (6)$$

The reflection coefficients are

$$r_{ss} = r'_s a^2 - r'_p b^2, \quad (7)$$

$$r_{sp} = -(r'_s + r'_p)ab, \quad (8)$$

$$r_{ps} = (r'_s + r'_p)ab = -r_{sp}, \quad (9)$$

$$r_{pp} = r'_p a^2 - r'_s b^2, \quad (10)$$

where r'_s and r'_p are the reflection coefficients in the co-moving frame for s- and p-polarized waves, respectively. And the factors

$$a = \gamma(k_\rho^2 - \beta k_0 k_x) / (k'_\rho k_\rho), \quad (11)$$

$$b = \gamma(\beta k_y k_z) / (k'_\rho k_\rho), \quad (12)$$

which obey

$$a^2 + b^2 = 1. \quad (13)$$

Here $k_\rho = \sqrt{k_x^2 + k_y^2}$, $k'_x = \gamma(k_x - \beta k_0)$ and $k'_\rho = \sqrt{(k'_x)^2 + k_y^2}$. Note polarization mixing will not be a significant effect at non-relativistic velocities due to the factor

β in the off-diagonal elements of the reflection tensor (r_{sp} and r_{ps}).

It is interesting to note that along symmetry directions dictated by the direction of motion, polarization mixing disappears regardless of the velocity. From the above generalized scattering matrix, the case of $k_y = 0$ simplifies to

$$r_{ss}(\omega, k_x) = r'_s(\omega', k'_x), \quad (14)$$

$$r_{pp}(\omega, k_x) = r'_p(\omega', k'_x), \quad (15)$$

and

$$r_{sp} = r_{ps} = 0. \quad (16)$$

The above equations have a simple but important interpretation. The off-diagonal components signifying polarization mixing are identically zero when $k_y = 0$. Furthermore and more importantly, the reflection from a moving plate can be expressed simply as the standard Fresnel reflection from a stationary plate with a Doppler shifted frequency and wavevector e.g.: for p-polarized waves with $k_y = 0$, $r_p^{\text{mov}}(\omega, k_x) = r'_p(\omega', k'_x)$. Specifically, at the relativistic phase balance wavevector (equation (2)), we have the unique Doppler mapping

$$\omega' = -\omega, \quad k'_x = k_x. \quad (17)$$

i.e. the frequency shifts sign and the wavevector remains the same, consistent with the invariance of the four dimensional momentum vector. Thus $r_p^{\text{mov}}(\omega, k_x) = r'_p(-\omega, k_x)$. Note r'_p is reflection from a stationary plate in the co-moving frame so we have

$$r_p^{\text{mov}}(\omega, k_x) = (r'_p(\omega, k_x))^*, \quad (18)$$

which is the complex conjugate of the reflection coefficient from the stationary plate in the lab frame. We have thus recovered the central result that $r_2 = r_1^*$ at the phase balance wavevector.

4. Generalized resonance condition between moving plates

We now formulate the resonance condition in terms of the scattering matrices (S_1, S_2) of the plates. In matrix form, the generalized Fabry–Perot resonance condition is that the determinant of the matrix $1 - S_1 S_2 e^{2ik_z d}$ should be zero,

$$\Delta = \det(1 - S_1 S_2 e^{2ik_z d}) = a^2 D_{ss} D_{pp} + b^2 D_{sp} D_{ps} = 0. \quad (19)$$

Here $D_{ss} = 1 - e^{2ik_z d} r_{1s} r'_{2s}$, $D_{pp} = 1 - e^{2ik_z d} r_{1p} r'_{2p}$, $D_{sp} = 1 + e^{2ik_z d} r_{1s} r'_{2p}$, $D_{ps} = 1 + e^{2ik_z d} r_{1p} r'_{2s}$. $r_{1(s,p)}$ are the reflection coefficients from the stationary plate, $r'_{2(s,p)}$ are the reflection coefficients in the co-moving frame. Note the phase balance wavevector achieves the unique Doppler mapping $\omega' = -\omega$, $k'_x = k_x$ and hence the various components of Δ have to be analyzed for this specific case. Due to the reality of fields, the reflection coefficients in the co-moving frame at frequency $-\omega$ are the complex conjugates of corresponding

reflection coefficients in the lab frame at frequency ω , $r'_{2(s,p)}(-\omega, k_x, k_y) = r_{1(s,p)}^*(\omega, k_x, k_y)$.

We now note the critical fact that at the phase balance wavevector we have

$$\text{Im}(D_{ss}) = \text{Im}(D_{pp}) = \text{Im}(D_{sp}D_{ps}) = 0. \quad (20)$$

Thus the multi-reflection factor Δ which includes polarization mixing and relativistic effects is real valued at the phase balance vector. Furthermore, in the presence of surface waves there will always exist a critical distance when this multi-reflection factor is identically zero ($\Delta = 0$). The main contribution of our work is this delicate phase balance and amplitude balance condition that has not been pointed out before.

The multi-reflection factor Δ exhibits a weak dependence on k_y at non-relativistic velocities. Furthermore, waves with non-zero k_y have enhanced damping compared to the case of $k_y = 0$. Therefore Δ will reach its local minimum at $k_y = 0$ where the damping factor $e^{-2|k_z|d}$ is smaller compared to the case with nonzero k_y . We now have a simplified form for the multi-reflection factor which is $\Delta = D_{ss}D_{pp}$. The s-polarized reflection coefficients exhibit no enhancement due to lack of surface waves ($|r_s| < 1$), implying a positive D_{ss} , so to achieve a resonance i.e. $\Delta = 0$, we arrive at the condition

$$D_{pp}(k_x^{PB}, k_y = 0) = 1 - |r_p(\omega)|^2 e^{-2|k_z|d} = 0. \quad (21)$$

We can adjust the distance d to make this factor zero as long as there is surface wave enhancement for the phase balance wavevector ($|r_p| > 1$). Note that $|r_p|$ reaches its maximum at the SPR due to evanescent wave enhancement ($\omega = \omega_{\text{SPR}}$). Thus the condition that D_{pp} equals zero at this resonance frequency leads to the critical distance

$$d_0 = \frac{V}{\omega_{\text{SPR}}} \ln |r_p(\omega_{\text{SPR}})| \sqrt{\frac{\gamma^2}{2 + 2\gamma}}, \quad (22)$$

For most cases of interest, we have $\gamma = 1$, so $d_0 = V \ln |r_p(\omega_{\text{SPR}})| / (2\omega_{\text{SPR}})$. Note that we achieve an upper bound on the critical distance. The role of deviations from the Drude model and limitations of amplitude enhancement due to non-locality has been analyzed in [21]. The analysis shows that the minimum velocity to observe the effect is of the order of the Fermi velocity of the electrons in the metal.

5. Derivation of non-equilibrium vacuum friction

We now consider the effect of such a resonance on physical observables. We choose to study the momentum transfer between moving plates that leads to a drag force opposing motion: non-equilibrium vacuum friction. We emphasize that the non-integrable nature of this resonance can play an important role in various phenomena. Our derivation utilizes the scattering matrix theory of heat transfer [20, 35] generalized to the case of moving media to recover the results known from the Maxwell's stress-tensor approach for Casimir forces [22, 23]. The net number of photons exchanged

between the two plates is

$$N = \text{Tr} \left[(1 - S_2^\dagger S_2) D (1 - S_1 S_1^\dagger) D^\dagger \right] \times (n(\omega, T_1) - n(\omega', T_2)) \quad (23)$$

for propagating waves (PWs), and

$$N = \text{Tr} \left[(S_2 - S_2^\dagger) D (S_1^\dagger - S_1) D^\dagger \right] \times (n(\omega, T_1) - n(\omega', T_2)) \quad (24)$$

for EWs, where $D = e^{ik_z d} / (1 - S_1 S_2 e^{2ik_z d})$, $n(\omega, T) = 1 / (e^{\hbar\omega/k_B T} - 1)$ is the Bose-Einstein occupation number.

With the help of the scattering matrix and after some algebra, one can derive the expression for number of photons exchanged

$$N(\omega, k_x, k_y) = (n(\omega, T_1) - n(\omega', T_2)) \left\{ \frac{1}{|\Delta|^2} e^{-2\text{Im}(k_z)d} \times \left[a^2 (1 - |r_{1p}|^2) (1 - |r'_{2p}|^2) |D_{ss}|^2 + b^2 (1 - |r_{1p}|^2) (1 - |r'_{2s}|^2) |D_{sp}|^2 + (p \rightarrow s) \right] \right\}, \text{ PWs}$$

$$N(\omega, k_x, k_y) = (n(\omega, T_1) - n(\omega', T_2)) \left\{ \frac{4}{|\Delta|^2} e^{-2\text{Im}(k_z)d} \times \left[a^2 \text{Im}(r_{1p}) \text{Im}(r'_{2p}) |D_{ss}|^2 - b^2 \text{Im}(r_{1p}) \text{Im}(r'_{2s}) |D_{sp}|^2 + (p \rightarrow s) \right] \right\}, \text{ EWs} \quad (25)$$

The symbol $p \leftrightarrow s$ denotes the terms that can be gained by permuting the indexes p and s of preceding terms, and the definitions of other symbols can be found in equation (19). The dispersive force, i.e., the momentum transfer between the two plates [20], is the product of the total number of exchanged photons and the momentum of a single photon $\hbar k_x$ (\hbar is the Planck constant divided by 2π)

$$f_x(\omega, k_x, k_y) = \hbar k_x N(\omega, k_x, k_y). \quad (26)$$

We also note that the energy transfer between the two plates is the product of the total number of photons exchanged and the energy of a single photon $\hbar\omega$.

The net dispersive force can be achieved by integrating all possible partial waves ω, k_x and k_y [20] in the above equation (26). Note that the frequency ω should be positive. The friction can be calculated by

$$F_x = \int_0^\infty \frac{d\omega}{2\pi} \int_{-\infty}^\infty \frac{dk_x}{2\pi} \int_{-\infty}^\infty \frac{dk_y}{2\pi} \hbar k_x N(\omega, k_x, k_y). \quad (27)$$

Note that N has different expressions for PWs and EWs (see equation (25)). We can then recover the results in [22] which has a detailed calculation based on the stress tensor approach.

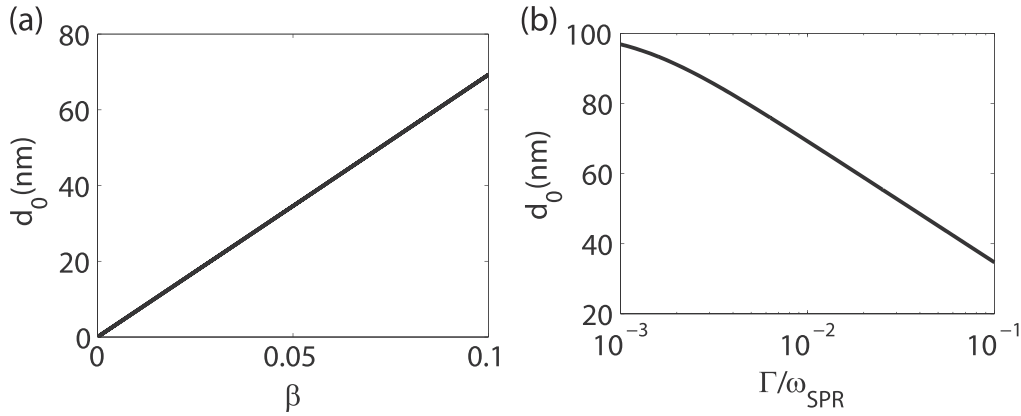


Figure 2. The opposing effects of increasing velocity and damping on the singular resonance condition. (a) Critical distance varying with moving velocity. The critical distance increases linearly versus moving velocity, in agreement with equation (22). (b) As the Drude damping increases, the critical distance where the resonance occurs decreases. This is expected since the amplitude balance condition is sensitive to loss in the surface plasmon resonance and occurs only if the plates are in the extreme near-field.

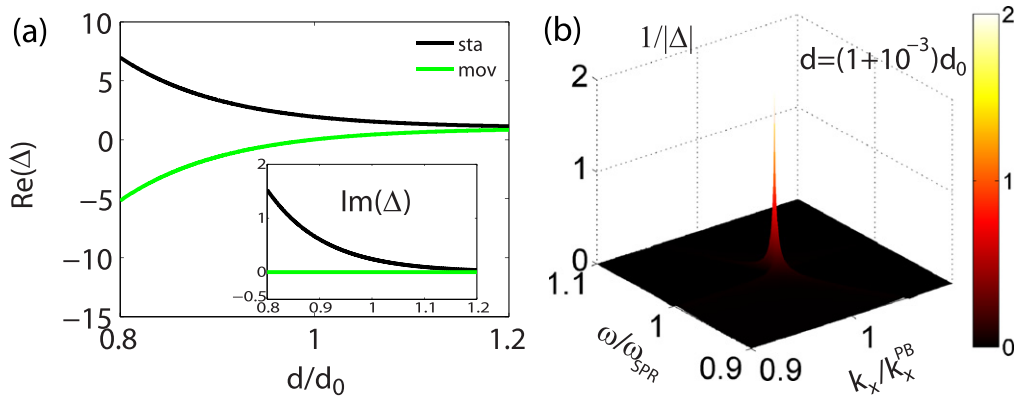


Figure 3. (a) Values of multi-reflection factor Δ as a function of distance at the phase balance wavevector and SPR frequency. The fact that $\text{Im}(\Delta) = 0$ holds true for all distances in the moving plates, which is not valid for the stationary case. For moving plates at the phase balance wavevector, Δ crosses zero at the critical distance (d_0). However, for stationary plates, Δ can never be exactly zero, which is clear from the plot. (b) The denominator in the expression of photon transfer ($1/|\Delta|$) resolved by frequency and lateral wavevector k_x at $d \rightarrow d_0^+$ ($d = (1 + 10^{-3})d_0$). Note the huge peak in the middle located at the phase balance wavevector and the SPR frequency, where the PAB condition leads to a vanishing Δ . In both (a) and (b), we take $k_y = 0$.

6. Results and discussion

Here we consider a Drude metal with frequency dependent permittivity given by $\epsilon(\omega) = 1 - 2\omega_{\text{SPR}}^2/(\omega^2 + i\Gamma\omega)$ with the SPR frequency $\omega_{\text{SPR}} = 1 \times 10^{15}$ Hz and $\Gamma = 0.01\omega_{\text{SPR}}$. The temperatures are chosen to be $T_1 = 320$ K and $T_2 = 300$ K. Note the resonant effect we are considering depends solely on the classical electromagnetic scattering matrix and the effect does not depend on the temperature difference. At the velocity of $V = c/10$, the critical distance d_0 that satisfies the singular resonance condition is about 70 nm. In figure 1(b), we show the enhancement of reflection coefficients due to SPR and indicate the phase balance wavevector at this velocity.

In figure 2(a), we show the effect of moving velocity on the critical distance. It is clear that the critical distance increases linearly as moving velocity increases. We also examine the dependence of critical distance on the loss parameter Γ in the Drude model, which affects the reflection

coefficient, or the enhancement of EWs. At the quasi-static approximation, we have $|r_p(\omega_{\text{SPR}})| = \omega_{\text{SPR}}/\Gamma$, so from equation (22) the critical distance d_0 decreases logarithmically as the loss parameter increases. In figure 2(b), we observe that $d_0 \sim -\log(\Gamma/\omega_{\text{SPR}})$, which is thus in agreement with our theoretic prediction.

In figure 3(a), we plot the multi-reflection factor Δ at various distances near the critical distance at the phase balance wavevector and the SPR frequency. In the moving plates, we can clearly see that Δ is purely real at the phase balance wavevector, which is a sign of phase balance and in agreement with our theory. Furthermore, Δ crosses zero at the critical distance, where the amplitude balance is fulfilled. However, for the stationary case, Δ can never be exact zero, which is clear in the plot. In figure 3(b), we plot the denominator ($1/|\Delta|$) in the expression of photon transfer by varying frequencies and lateral wavevector (k_x). The distance is chosen to be close to the critical distance. We clearly see a huge peak located at the phase balance wavevector and SPR frequency, since at such a distance, the multi-reflection factor

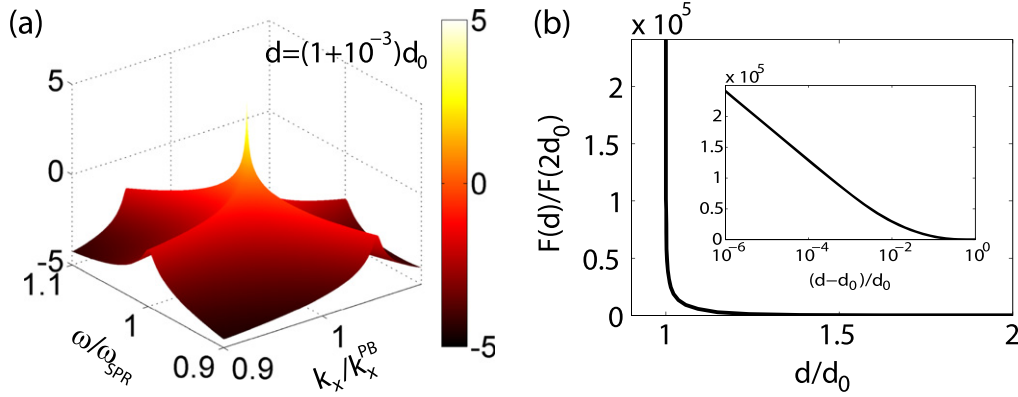


Figure 4. (a) Contribution to momentum transfer resolved by frequency and lateral wavevector k_x (normalized to the phase balance wavevector) at $d \rightarrow d_0^+$ ($d = (1 + 10^{-3})d_0$). The huge peak is due to the singular resonance that arises since the amplitude balance condition is satisfied when $d \rightarrow d_0^+$ and phase balance condition is satisfied at the phase balance wavevector. This leads to giant photon exchange and thus momentum transfer between moving plates at the singular resonance. (b) The distance dependence of friction at distances near d_0 . The force increases dramatically near the critical distance d_0 . In the inset, the x axis is in $(d/d_0 - 1)$ and log scale. We clearly see a linear increasing behavior as d approaches d_0 . This is consistent with our theoretical scaling law which predicts a giant non-equilibrium vacuum friction.

(Δ) is very close to zero indicated by figure 3(a). Thus we expect a giant photon number transfer at the PAB condition, which can further lead to giant momentum transfer between the moving plates.

In figure 4(a), we plot the spectrum of momentum exchanged according to their frequency and wavevector in the lab frame. Our result shows that as the plates are moved closer to the singular FP resonance condition ($d \rightarrow d_0^+$), a fundamentally new mechanism of photon exchange emerges. This is evident from figure 4(a) where photons with the phase balance wavevector and SPR frequency completely dominate the interaction. Note that this occurs when the frequencies in the co-moving frame and lab frame are equal and opposite, the condition for phase balance and also the enhancement of EWs due to SPR compensate the decay of waves inside the gap, the condition of amplitude balance. Indeed, the multiple scattering term Δ becomes vanishingly small giving rise to a giant enhancement in the number of photons exchanged.

In figure 4(b), the magnitudes of friction evaluated around the resonance at $d_1 = 2d_0$ and $d_2 = (1 + 10^{-6})d_0$ are $2.34 \times 10^{-6} \text{ N m}^{-2}$ and 0.563 N m^{-2} , respectively. We strongly emphasize the five order of magnitude increase in friction when the distance changes only by 70 nm. When the distance d approaches the critical distance d_0 , we predict the non-equilibrium friction F to scale with distance as [21] $F \sim \ln[d_0/(d - d_0)]$. We plot the friction versus distance in figure 4(b) to verify the theoretical predictions. We clearly see that the force increases dramatically near the critical distance. We also see that the friction increases as $\ln[d_0/(d - d_0)]$ when d approaches d_0 .

We do not assume ideal mirrors [18] and losses or dispersion are not an impediment to the singular resonance. At such a high velocity of $c/10$, our assumption of a local Drude model should be valid because the phase balance wavevector ($20k_0$) is not very large. However, for lower velocities, the corresponding phase balance wavevector can be significantly

larger than free space wavevector, where the theory should be modified for electromagnetic interactions with large wavevectors [36, 37]. Note, the only fundamental requirement is the enhancement in the reflection of coefficient of EWs which is known to occur even in the presence of non-locality (e.g.: graphene plasmons [38, 39]). The role of the giant photon flux caused by the resonance on assumptions of macroscopic and local fluctuational electrodynamics will be analyzed in future work.

7. Conclusion

In summary, we have provided a compact form of the scattering matrix of moving plates and derived the non-equilibrium vacuum friction formula through the scattering matrix theory of heat transfer. We have provided a detailed numerical and theoretical analysis of the singular resonance condition in moving media and predicted the existence of a giant nonequilibrium vacuum friction. Our earlier work discussed the non-local hydrodynamic model [21] and effect on the singular resonance while here we have shown that the result is valid in the relativistic limit.

A direct experimental investigation of our predicted effect is difficult due to constraints on the velocities to achieve this resonance however the delicate PAB condition can emerge as a ubiquitous principle to be applied in moving nanophotonic media. Non-equilibrium opto-mechanical structures can also lead to light amplification effects which rely on our singular resonance condition.

References

- [1] Polder D and Van Hove M 1971 Theory of radiative heat transfer between closely spaced bodies *Phys. Rev. B* **4** 3303–14

- [2] Pendry J B 1999 Radiative exchange of heat between nanostructures *J. Phys.: Condens. Matter* **11** 6621
- [3] Volokitin A I and Persson B N J 2001 Radiative heat transfer between nanostructures *Phys. Rev. B* **63** 205404
- [4] Mulet J-P, Joulain K, Carminati R and Greffet J-J 2002 Enhanced radiative heat transfer at nanometric distances *Microscale Thermophys. Eng.* **6** 209–22
- [5] Fu C J and Zhang Z M 2006 Nanoscale radiation heat transfer for silicon at different doping levels *Int. J. Heat Mass Transfer* **49** 1703–18
- [6] Hu L, Narayanaswamy A, Chen X and Chen G 2008 Near-field thermal radiation between two closely spaced glass plates exceeding planck's blackbody radiation law *Appl. Phys. Lett.* **92** 133106–3
- [7] Shen S, Narayanaswamy A and Chen G 2009 Surface phonon polaritons mediated energy transfer between nanoscale gaps *Nano Lett.* **9** 2909–13
- [8] Rousseau E, Siria A, Jourdan G, Volz S, Comin F, Chevrier J and Greffet J-J 2009 Radiative heat transfer at the nanoscale *Nat. Photonics* **3** 514–7
- [9] Biehs S-A, Ben-Abdallah P, Rosa F S S, Joulain K and Greffet J-J 2011 Nanoscale heat flux between nanoporous materials *Opt. Express* **19** 1088–103
- [10] Nefedov I S and Simovski C R 2011 Giant radiation heat transfer through micron gaps *Phys. Rev. B* **84** 195459
- [11] Jones A C and Raschke M B 2012 Thermal infrared near-field spectroscopy *Nano Lett.* **12** 1475–81
- [12] Guo Y, Cortes C L, Molesky S and Jacob Z 2012 Broadband super-planckian thermal emission from hyperbolic metamaterials *Appl. Phys. Lett.* **101** 131106–5
- [13] Guo Y and Jacob Z 2013 Thermal hyperbolic metamaterials *Opt. Express* **21** 15014–9
- [14] De Wilde Y, Formanek F, Carminati R, Gralak B, Lemoine P-A, Joulain K, Mulet J-P, Chen Y and Greffet J-J 2006 Thermal radiation scanning tunnelling microscopy *Nature* **444** 740–3
- [15] Teodorovich E V 1978 On the contribution of macroscopic van der Waals interactions to frictional force *Proc. R. Soc. A* **362** 71–77
- [16] Levitov L S 1989 van der Waals' friction *Europhys. Lett.* **8** 499
- [17] Pendry J B 1997 Shearing the vacuum—quantum friction *J. Phys.: Condens. Matter* **9** 10301
- [18] Kardar M and Golestanian R 1999 The 'friction' of vacuum, and other fluctuation-induced forces *Rev. Mod. Phys.* **71** 1233–45
- [19] Volokitin A I and Persson B N J 2007 Near-field radiative heat transfer and noncontact friction *Rev. Mod. Phys.* **79** 1291–329
- [20] Maghrebi M F, Golestanian R and Kardar M 2013 Scattering approach to the dynamical Casimir effect *Phys. Rev. D* **87** 025016
- [21] Guo Y and Jacob Z 2013 Singular evanescent wave resonances (arXiv:1311.3718 [cond-mat, physics:physics])
- [22] Manjavacas A and García de Abajo F J 2010 Vacuum friction in rotating particles *Phys. Rev. Lett.* **105** 113601
- [23] Manjavacas A and García de Abajo F J 2013 Thermal and vacuum friction acting on rotating particles *Phys. Rev. A* **87** 019904
- [24] Maghrebi M F, Jaffe R L and Kardar M 2012 Spontaneous emission by rotating objects: a scattering approach *Phys. Rev. Lett.* **108** 230403
- [25] Volokitin A I and Persson B N J 2008 Theory of the interaction forces and the radiative heat transfer between moving bodies *Phys. Rev. B* **78** 155437
- [26] Philbin T G and Leonhardt U 2009 Casimir–Lifshitz force between moving plates at different temperatures (arXiv:0904.2148 [quant-ph])
- [27] Nezhlin M V 1976 Negative-energy waves and the anomalous doppler effect *Sov. Phys. - Usp.* **19** 946
- [28] Lambrecht A, Jaekel M-T and Reynaud S 1996 Motion induced radiation from a vibrating cavity *Phys. Rev. Lett.* **77** 615–8
- [29] Silveirinha M G and Maslovski S I 2012 Exchange of momentum between moving matter induced by the zero-point fluctuations of the electromagnetic field *Phys. Rev. A* **86** 042118
- [30] Nesterenko V V and Nesterenko A V 2014 Macroscopic approach to the Casimir friction force *JETP Lett.* **99** 581–4
- [31] Kong J A 1990 *Electromagnetic Wave Theory* (New York: Wiley)
- [32] Raether H 1988 *Surface Plasmons on Smooth Surfaces* (Berlin: Springer)
- [33] Maier S A 2007 *Plasmonics: Fundamentals and Applications: Fundamentals and Applications* (Berlin: Springer)
- [34] Landau L D, Lifshitz E M and Pitaevskii L P 1984 *Electrodynamics of Continuous Media* (Oxford: Pergamon)
- [35] Bimonte G 2009 Scattering approach to Casimir forces and radiative heat transfer for nanostructured surfaces out of thermal equilibrium *Phys. Rev. A* **80** 042102
- [36] McMahon J M, Gray S K and Schatz G C 2009 Nonlocal optical response of metal nanostructures with arbitrary shape *Phys. Rev. Lett.* **103** 097403
- [37] Raza S, Toscano G, Jauho A-P, Wubs M and Mortensen N A 2011 Unusual resonances in nanoplasmonic structures due to nonlocal response *Phys. Rev. B* **84** 121412
- [38] Koppens F H L, Chang D E and de Abajo F J G 2011 Graphene plasmonics: a platform for strong light–matter interactions *Nano Lett.* **11** 3370–7
- [39] Brar V W, Jang M S, Sherrott M, Lopez J J and Atwater H A 2013 Highly confined tunable mid-infrared plasmonics in graphene nanoresonators *Nano Lett.* **13** 2541–7